

AIMS

Present the factors involved in the erosion of slash and burn agriculture from the first decades of the 20th century up to the present day,

Evaluate how this process has interfered in a forested landscape of an Atlantic rainforest area inhabited by the quilombola community of Pedro Cubas.



HYPOTHESIS

The slash and burn agriculture is considered responsible, at least in part, for the current composition and structure of the local forest landscape.

The relation between quilombola communities and the landscape is also being altered.



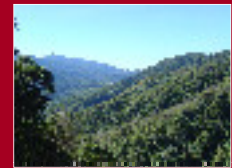
RESEARCH

Oral history
Agricultural practices
Emic data

Contextualization of the processes involved in the region's traditional agriculture configuration and transformation since the beginning of the 20th century.

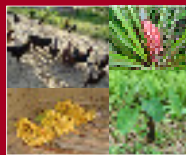


QUILOMBOLAS AND FORESTS



SUBSISTENCE STRATEGIES

HOUSEHOLDS



RELATIONS WITH LOCAL SOCIETY

SOCIAL WORK GROUPS



20st CENTURY

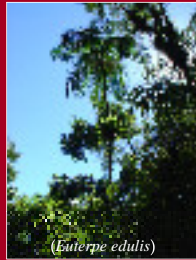
Erosion of Coivara

Palm-heart extraction

Roads

Construction of schools

Natural Protected Areas



NOWADAYS

Dam construction projects

Right to property and land



EROSION OF COIVARA PRACTICES

Abandonment of coivara agriculture

Increase of individual laboring

Rural exodus

Lost of associated knowledge

PRELIMINARY RESULTS

Villages with residential clusters.

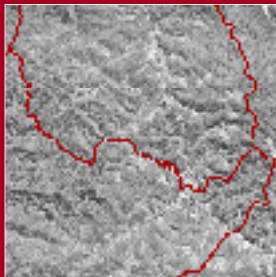
Decreases in areas designated to agriculture.



PEDRO CUBAS

AERIAL PHOTOGRAPHS PATCHES

1962



2000



NEW HYPOTHESES

Articulation with the national society

Sustainability of shifting agriculture systems

ACKNOWLEDGEMENTS

ITESP:

Gabriela Paes
Maria Ignez Maricondi

LASERE FFLCH USP:

Bené

LEPAC IB USP:

Leandro

ISA:

Carolina Toffoli
Renata Barroso

CAPES

FAPESP

LEEH IBUSP

IBOT - SMA São Paulo

Translation Talita Zupo

QUILOMBO DE PEDRO CUBAS



This document was created with Win2PDF available at <http://www.daneprairie.com>.
The unregistered version of Win2PDF is for evaluation or non-commercial use only.